



EROAD

Take driver safety to the next level with **EROAD Clarity Edge**

Clarity Edge is a powerful protective video solution that re-defines the role of dashcams. The flexible AI-powered, in-vehicle camera detects unsafe driving behaviours to help coach and reward drivers, reduce accidents, and boost fleet performance. Easily scale the solution to the needs of your business by pairing the additional fatigue cameras to enable safer, proactive driving habits.

Driving is the #1 cause of workplace fatalities in Australia & New Zealand¹

Your biggest risk is not falls from height, or chemical exposure. It's driving. Additionally, nearly 20%² of fatal road crashes are caused by driver fatigue.

When your drivers are fatigued or distracted, as well as being more susceptible to accidents, their driving technique suffers. Reduced attention, vigilance and reaction times can lead to more erratic driving behaviour. Left unchecked, this can lead to costly accidents, higher fuel and maintenance costs as well as damage to brand reputation.



How Clarity Edge can help protect your drivers, and your business



Deliver impactful driver coaching



Improve risk mitigation efforts



Provide evidence to protect not-at-fault drivers



Identify patterns to help drivers build safer habits



Safeguard business reputation



Help reduce accidents

¹ <https://data.worksafe.govt.nz/graph/summary/fatalities> ; <https://data.safeworkaustralia.gov.au/insights/key-whs-stats-2023>

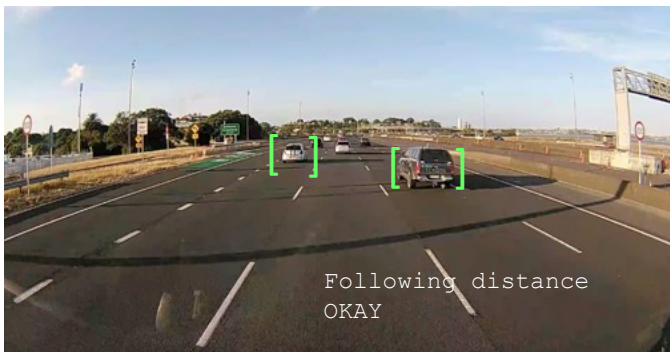
² <https://www.ncbi.nlm.nih.gov/pmc/articles/PMC9916394/#:-:text=In%20Australia%2C%20nearly%2020%25%20of,among%20truck%20drivers%20%5B21%5D>



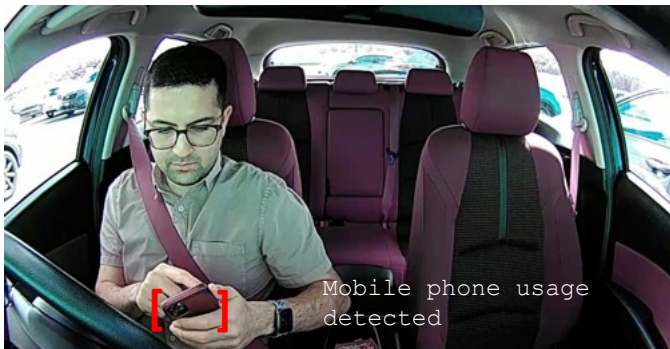
KEY FEATURES

- Range of behaviours available for monitoring including:
 - **mobile use**
 - **distraction**
 - **smoking**
 - **no seatbelt**
 - **yawning**
 - **following distance and near miss/collisions.**
- The all-encompassing high quality, wide angle video captures events in rich detail, both in-cab and on-road
- Optional in-cab voice alerts deliver real-time driver awareness
- Notifications and escalation pathways to help manage key risks
- Option to connect additional fatigue camera to detect more signs of fatigue
- Automated tagging of behaviours streamlines review process

Road AI example



Driver AI example



SPECIFICATIONS

Online video resolution	<ul style="list-style-type: none"> • Triggered clips: D1 at 15FPS • Requested clips: 720p at 20FPS
Local storage	<p>Expandable microSD card. 128GB as standard. Option to upgrade to 256GB. Default 128GB stores up to:</p> <ul style="list-style-type: none"> • 50 hours (road camera only) • 40 hours (road + driver cameras) • 30 hours (road + driver + fatigue cameras)
Ingress Protection (IP rating)	IP30 (not dust/waterproof)
Operating temperature	-40C ~ +70C
Dimensions	113.0 × 67.8 × 88.2 mm, excluding bracket
Weight	300g (10.5 oz)
Audio	<ul style="list-style-type: none"> • Built-in mic (default OFF)
Communication & coverage	<ul style="list-style-type: none"> • GPS, GNSS • 4G Cellular networks: <ul style="list-style-type: none"> • AUS: Telstra • NZL: Vodafone GDSP
Sensors	<ul style="list-style-type: none"> • 6-axis IMU for acceleration/rotation
Road AI	<p>ADAS (advanced driver assistance systems): Tailgating, forward collision or nearmiss warning, proximity alert</p>
Driver AI	<p>DMS (Driver monitoring): Distraction, yawning, mobile phone, smoking, seatbelt unfastened, camera lens covered</p>
Telematics	Requires an active Ehubo or CoreHub
Additional hardware supported	Auxiliary fatigue camera
Field of view	<ul style="list-style-type: none"> • Front: 140° • Driver: 170°