



EROAD

EROAD Truck, Traffic & Satellite Map Layer

Optimise route planning

EROAD Truck, Traffic & Satellite Map Layer displays useful information on the Activity screen map that helps you better plan journeys and improve productivity.



ENHANCE VISIBILITY

Map view and layers enhance visibility into the location of your vehicles



IMPROVE PRODUCTIVITY

Shorten travel times, reduce fuel bills and better plan journeys using traffic flow information

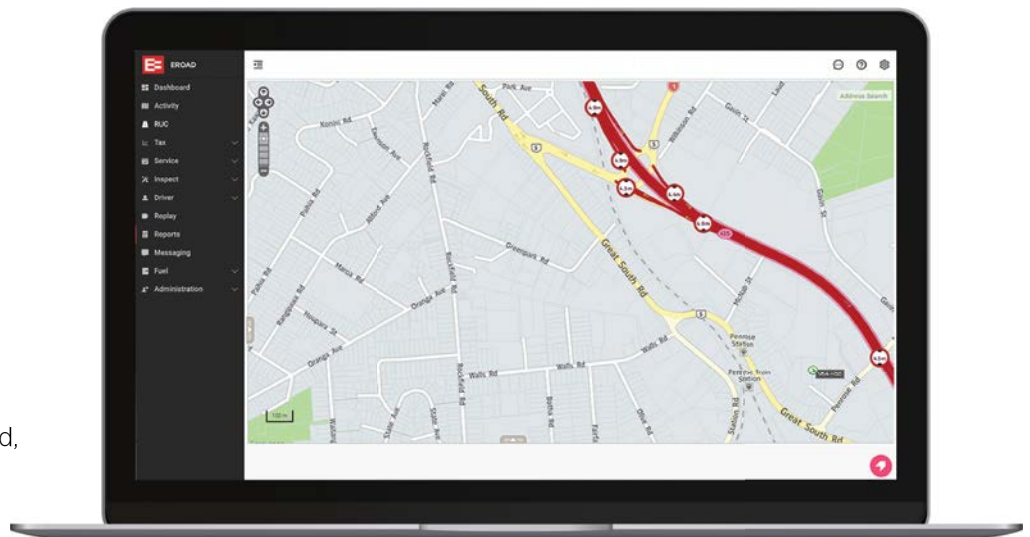


STAY UP TO DATE

EROAD map data is regularly refreshed, so you're always up to date with the latest road network

Route planning is essential to ensure the safe and efficient movement of your fleet. Trip information and real-time visibility into the location of your vehicles allows you to better manage risks and improve safety.

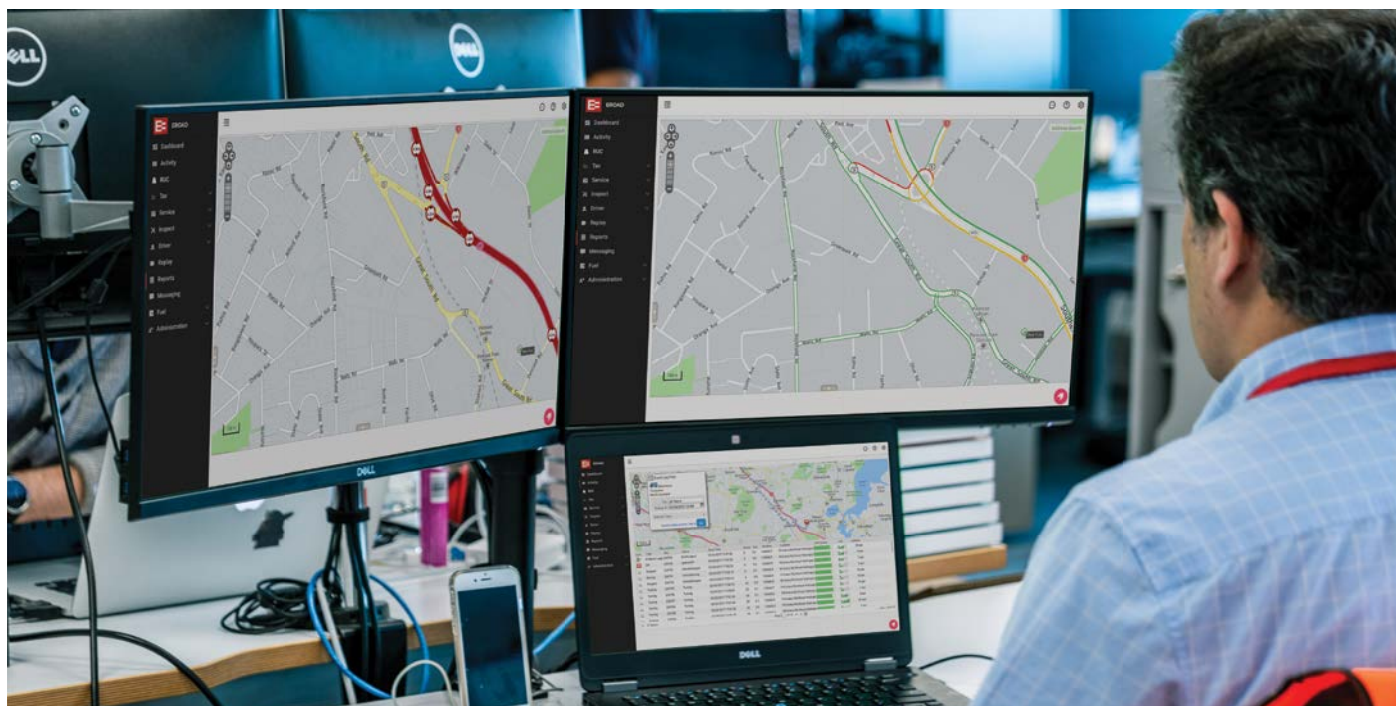
EROAD Truck, Traffic & Satellite Map Layer displays information on the Activity screen map in EROAD's web application, Depot, which you can use to plan your journey. Multiple map options include physical and legal restrictions for vehicles and loads, warnings for roads, traffic flow and other geospatial options. Your dispatchers can quickly and easily view the height, weight, width and length restrictions for a journey, and plan journeys using traffic flow information. You can also create geofences to help monitor restricted and high risk routes.





KEY FEATURES

- ✓ Map layers displayed on Activity screen includes map, satellite and terrain layers
- ✓ Height, weight, width, length and Hazmat restrictions displayed by road
- ✓ Ability to create geofences to monitor restricted and high risk routes.
Receive email notifications if a driver enters and leaves a restricted area
- ✓ Generate record of travel to ensure compliance with trip restrictions
- ✓ Real-time traffic flow information
- ✓ Physical and legal restrictions and warning information displayed by road
- ✓ Road network data is obtained from various sources for improved accuracy.
Posted speed changes are updated every two weeks, with a full data refresh every three months



About EROAD

EROAD develops technology solutions (products and services) that manage vehicle fleets, support regulatory compliance, improve driver safety and reduce the costs associated with driving. EROAD also provides valuable insights and data analytics to universities, government agencies and others who research, trial and evaluate future transport networks. This data enables those who use the roads to influence the design, management and funding of future transport networks.

See www.eroad.co.nz/products, or call **0800 4 EROAD** for more information.